



## COSCAP-South Asia Phase-III (2008-2012) Member States' Annual Contributions

	Member State	Contribution in USD						TOTAL
		Percentage	2008	2009	2010	2011	2012	
1.	<b>Bangladesh</b>	14.00%	63,140	65,996	67,984	69,972	71,932	<b>339,024</b>
2.	<b>Bhutan</b>	9.00%	40,590	42,426	43,704	44,982	46,242	<b>217,944</b>
3.	<b>India</b>	20.00%	90,200	94,280	97,120	99,960	102,760	<b>484,320</b>
4.	<b>Maldives</b>	12.50%	56,375	58,925	60,700	62,475	64,225	<b>302,700</b>
5.	<b>Nepal</b>	14.00%	63,140	65,996	67,984	69,972	71,932	<b>339,024</b>
6.	<b>Pakistan</b>	16.30%	73,513	76,838	79,153	81,467	83,749	<b>394,721</b>
7.	<b>Sri Lanka</b>	14.20%	64,042	66,939	68,955	70,972	72,960	<b>343,867</b>
	<b>Total</b>	<b>100</b>	<b>451,000</b>	<b>471,400</b>	<b>485,600</b>	<b>499,800</b>	<b>513,800</b>	<b>2,421,600</b>

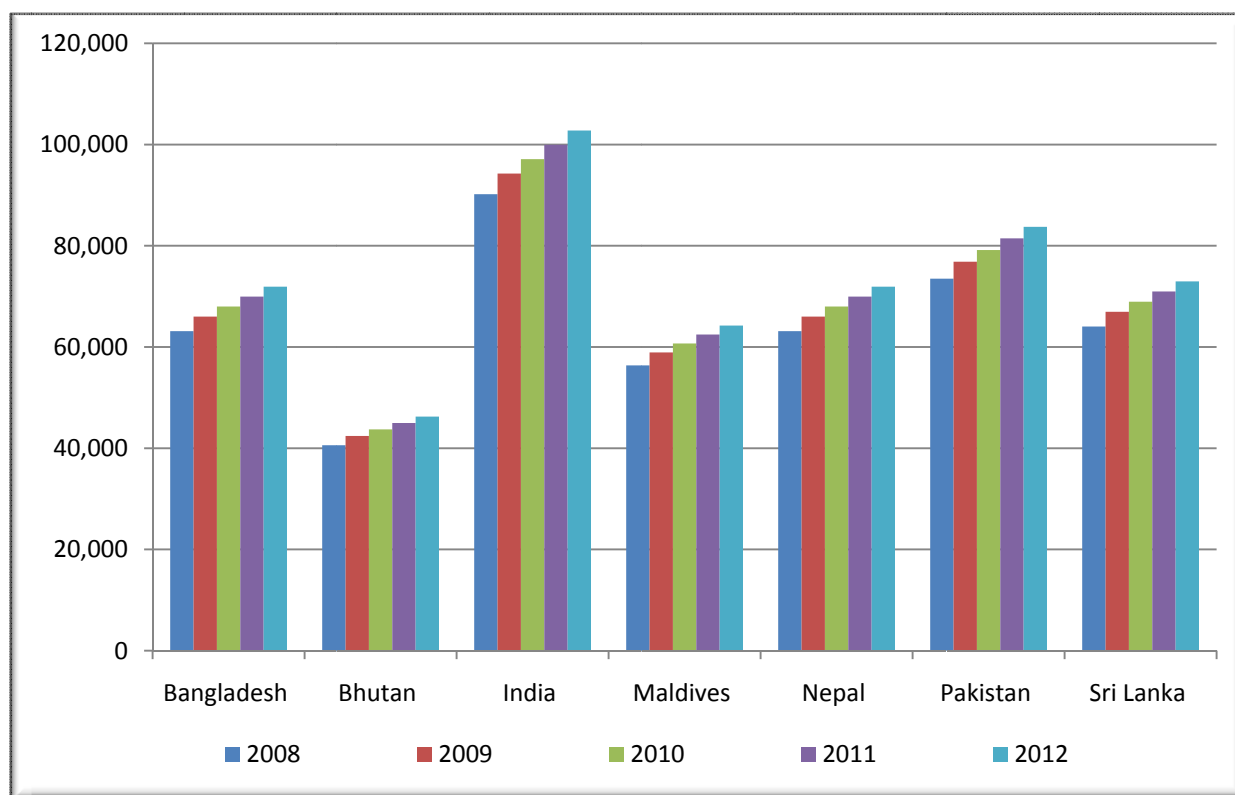


Figure : COSCAP-SA - States' Annual Contributions (2008-2012)